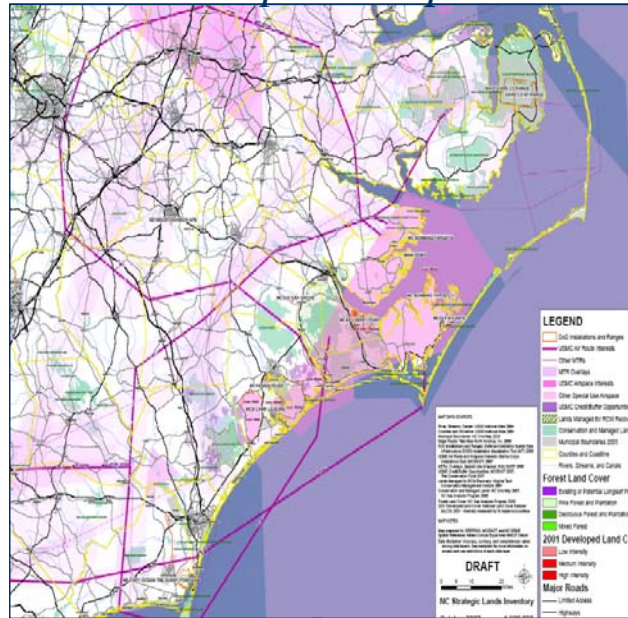




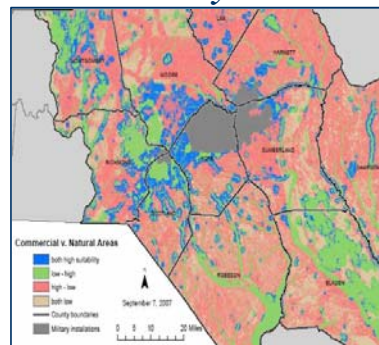
Strategic Lands Inventory

- A Strategic Lands Inventory (SLI) is an integral part of the SERPPAS model, which includes the combining of partner mission requirements (i.e., the “good map”) and land suitability mapping (see figure right). The prototype for the Strategic Lands Inventory was based on land suitability modeling recently carried out by Sustainable Sandhills Partnership and the BRAC Regional Task force in an 11-county region surrounding military installations around Fort Bragg, North Carolina.
- A land suitability analysis is a method for evaluating, classifying and mapping at a regional landscape. Land “suitability” represents potential for a type of land use, not actual use or predicted use.
- An SLI uses a rule-based, expert-opinion approach to developing criteria used in a land suitability analysis. This approach relies on the experience and judgment of local experts in economic development, business, planning, conservation, forestry, farming, and environmental protection. The proposed SLI being used in SERPPAS organizes land suitability analyses around six land use types: industrial development, commercial development, residential development, natural areas, working forests, and working farmland.
- Ultimately, the purpose of an SLI is to engage local communities and businesses in the creation of custom regional models and maps that will be the basis for sustainable land use and related policies and collaborative actions.

Mission Footprints/Requirements



Suitability Model



SLI is evolving and continues to incorporate other missions.